

AC positions



AMERESCO, INC.
12001 S. RIVERS VALLEY DR. #205
RESTON, VA 20191

REVISION	DATE
60% PROGRESS	8-21-18
100% REVIEW	9-4-18
CONSTRUCTION - BID	9-26-18
REVISIONS - 100% REVIEW	10-7-19
FOR CONSTRUCTION	11-20-19
FOR CONSTRUCTION	12-2-19

PROJECT NAME:
**PSM HAITI WAREHOUSE
SHORT TERM IMPROVEMENTS
AIRPORT INDUSTRIAL PARK FLEURIOT
WAREHOUSE, PORT-AU-PRINCE, HAITI**
CLIENT: **CHEMONICS INTERNATIONAL**
251 18TH ST, SUITE 1200
ARLINGTON, VA 22202

ISSUED FOR:

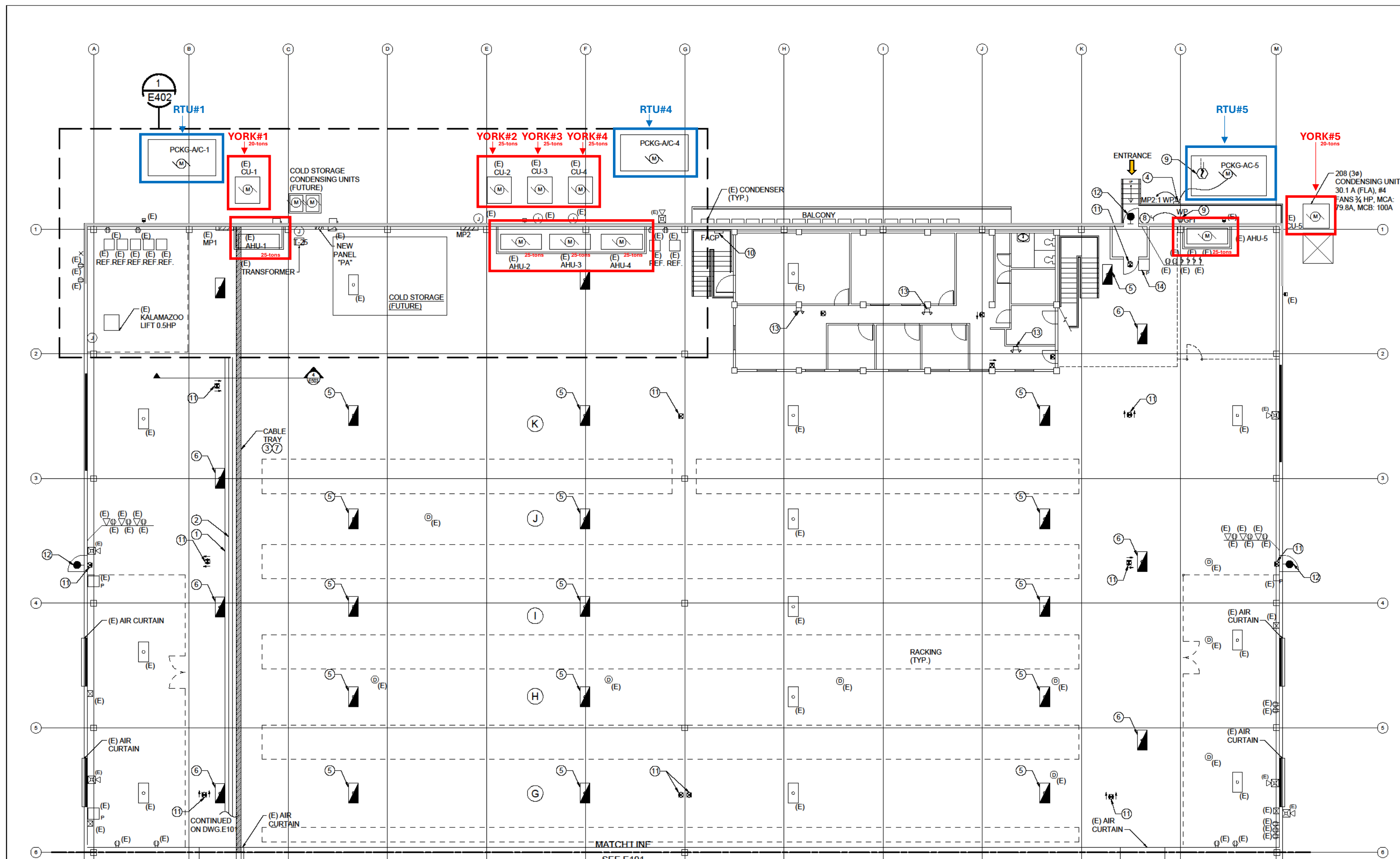
FOR CONSTRUCTION
12/02/2019

DRAWN BY SN	REVIEWED BY AL
SCALE 1/8" = 1'-0"	AMERESCO PROJECT NUMBER. 520794000

**AIR CONDITIONED
SIDE PART PLAN
NEW WORK**

E100

SHEET 19 OF 26



E100 NOTES:

PHASE III

- 1 NEW FEEDER TO PANEL PA. CONDUIT FOR NEW FEEDER TO BE INSTALLED IN BY TRAPEZE SUPPORT. REFER TO DRAWING E402 FOR MORE INFORMATION.
- 2 NEW FEEDER TO PANEL MP2. REFER TO POWER RISER DIAGRAM ON DWG. E502. CONDUIT FOR NEW FEEDER TO BE INSTALLED IN TRAPEZE SUPPORT. REFER TO DRAWING E402 FOR MORE INFORMATION.
- 3 PROVIDE NEW NEUTRAL CONDUCTOR TO THE EXISTING FEEDER SERVING THE PANEL MP1. REFER TO DWG. E402 FOR MORE INFORMATION.

PHASE IV

- 4 PROVIDE NEW DISCONNECT SWITCH FOR NEW PACKAGE AIR CONDITIONING UNITS. REFER TO DWG. E601 FOR DISCONNECT SCHEDULE. PROVIDE UNISTRUT FRAME SUPPORT FOR DISCONNECT INSTALLATION. REFER TO DETAIL #3 ON DWG. E503.
- 5 PROVIDE EMERGENCY BALLAST TO EXISTING LIGHT FIXTURES. CONNECT NEW EMERGENCY BALLAST TO THE EXISTING LIGHTING CIRCUIT AHEAD OF THE BRANCH CIRCUIT LIGHTING SWITCH.
- 6 PROVIDE NEW FLUORESCENT LIGHT FIXTURE, 2X4, 3-T8 WITH EMERGENCY BALLAST. CONNECT TO THE NEAREST EXISTING LIGHTING CIRCUIT. NEW LIGHT FIXTURE MOUNTING HEIGHT TO MATCH THE EXISTING.
- 7 CABLE TRAY TO REMAIN.
- 8 PROVIDE NEW RECEPTACLE NEMA 5-20R RECEPTACLE, GFI TYPE WITH WEATHERPROOF NEMA 3R ENCLOSURE.
- 9 PROVIDE NEW DUCT SMOKE DETECTOR FOR NEW AIR PACKAGE UNIT. CONNECT NEW DUCT SMOKE DETECTOR TO THE EXISTING FIRE ALARM SYSTEM. COORDINATE WITH MECHANICAL DRAWING M002.
- 10 ADDRESSABLE FIRE ALARM CONTROL PANEL TO REMAIN. EXISTING FIRE ALARM SYSTEM IS MANUFACTURED BY FIRE-LITE ALARMS MS-9200UDLS SERIES.

E100 NOTES:

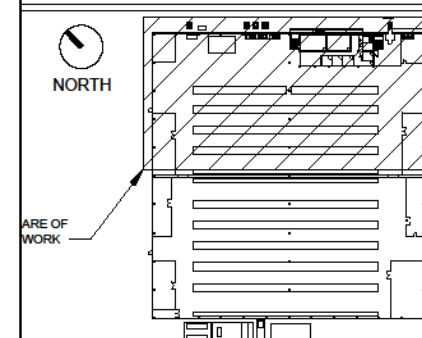
ITEMS TO BE PRICED SEPARATELY

- 11 PROVIDE EXIT SIGNS, LED TYPE, WITH 90 MINUTES NICKEL CADMIUM BATTERY, WHITE THERMOPLASTIC HOUSING, RED LETTER COLOR, SINGLE OR DOUBLE FACE AS SHOWN ON FLOOR PLAN, LITHONIA MANUFACTURER LQM SERIES OR APPROVED EQUAL. MINIMUM MOUNTING HEIGHT TO BE 2'-0" HIGHER THAN THE HEIGHT OF THE NEW LIFT EQUIPMENT. COORDINATE WITH THE OWNER FOR THE HEIGHT OF THE LIFT EQUIPMENT. CONNECT THE NEW EXIT SIGN TO THE EXISTING LIGHTING CIRCUIT AHEAD OF THE BRANCH CIRCUIT LIGHTING SWITCH.
- 12 PROVIDE NEW EMERGENCY EGRESS LIGHTING LED UNIT WITH 90 MINUTES BATTERY, BUILT-IN PHOTOCELL, SUITABLE FOR WET LOCATION, U.S. ARCHITECTURAL RZR-VM1-20LED-700mA OR APPROVED EQUAL. MOUNTING HEIGHT 10' AFF. CONNECT NEW EMERGENCY LIGHTING UNIT TO THE EXISTING LIGHTING CIRCUIT AHEAD OF THE BRANCH CIRCUIT LIGHTING SWITCH.
- 13 PROVIDE NEW EMERGENCY LIGHTING LED UNITS IN THE OFFICE AREAS WITH 90 MINUTES NICKEL CADMIUM BATTERY, LITHONIA ELM2L OR APPROVED EQUAL. CONNECT NEW EMERGENCY LIGHTING UNIT TO THE EXISTING LIGHTING CIRCUIT AHEAD OF THE BRANCH CIRCUIT LIGHTING SWITCH. EMERGENCY LIGHTING UNITS AND EXIT SIGNS AS SHOWN ARE TYPICAL FOR THE FIRST AND SECOND FLOORS IN THE OFFICE AREA.
- 14 PROVIDE NEW FIRE ALARM PULL STATION. NEW PULL STATION SHALL BE COMPATIBLE WITH THE EXISTING FIRE ALARM SYSTEM. CONNECT NEW FIRE ALARM PULL STATION TO THE EXISTING FIRE ALARM CONTROL PANEL.

SCALE

0 1 2 4 8 16
SCALE: 1/8"=1'-0"

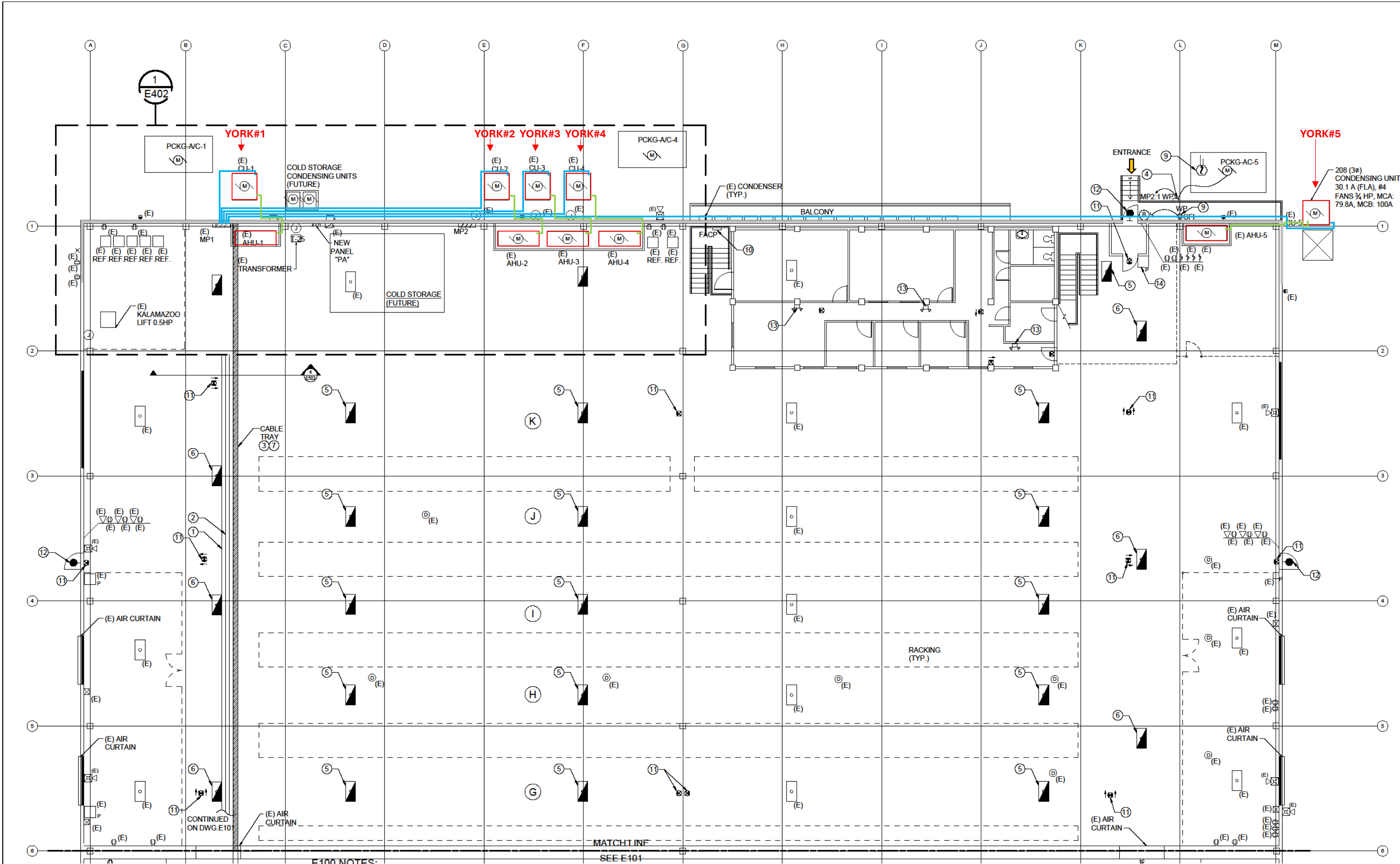
KEY PLAN



LEGEND

- YORK's position [Outdoor and Indoor units]
- CARRIER/RTU's position

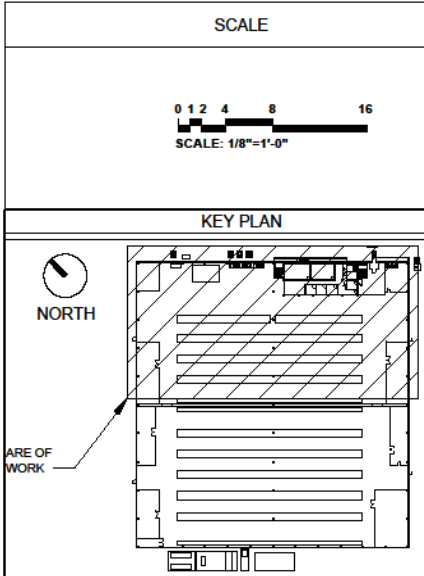
YORK's connection



1 AIR CONDITIONED SIDE PART PLAN
SCALE: 1/8" = 1'-0"

- PHASE III
- 1 NEW FEEDER TO PANEL PA. CONDUIT FOR NEW FEEDER TO BE INSTALLED IN BY TRAPEZE SUPPORT. REFER TO DRAWING E402 FOR MORE INFORMATION.
 - 2 NEW FEEDER TO PANEL MP2. REFER TO POWER RISER DIAGRAM ON DWG. E502. CONDUIT FOR NEW FEEDER TO BE INSTALLED IN TRAPEZE SUPPORT. REFER TO DRAWING E402 FOR MORE INFORMATION.
 - 3 PROVIDE NEW NEUTRAL CONDUCTOR TO THE EXISTING FEEDER SERVING THE PANEL MP1. REFER TO DWG. E402 FOR MORE INFORMATION.
- PHASE IV
- 4 PROVIDE NEW DISCONNECT SWITCH FOR NEW PACKAGE AIR CONDITIONING UNITS. REFER TO DWG. E601 FOR DISCONNECT SCHEDULE. PROVIDE UNISTRUT FRAME SUPPORT FOR DISCONNECT INSTALLATION. REFER TO DETAIL #3 ON DWG. E503.
 - 5 PROVIDE EMERGENCY BALLAST TO EXISTING LIGHT FIXTURES. CONNECT NEW EMERGENCY BALLAST TO THE EXISTING LIGHTING CIRCUIT AHEAD OF THE BRANCH CIRCUIT LIGHTING SWITCH.
 - 6 PROVIDE NEW FLUORESCENT LIGHT FIXTURE, 2X4, 3-T8 WITH EMERGENCY BALLAST. CONNECT TO THE NEAREST EXISTING LIGHTING CIRCUIT. NEW LIGHT FIXTURE MOUNTING HEIGHT TO MATCH THE EXISTING.
 - 7 CABLE TRAY TO REMAIN.
 - 8 PROVIDE NEW RECEPTACLE NEMA 5-20R RECEPTACLE, GFI TYPE WITH WEATHERPROOF NEMA 3R ENCLOSURE.
 - 9 PROVIDE NEW DUCT SMOKE DETECTOR FOR NEW AIR PACKAGE UNIT. CONNECT NEW DUCT SMOKE DETECTOR TO THE EXISTING FIRE ALARM SYSTEM. COORDINATE WITH MECHANICAL DRAWING M002.
 - 10 ADDRESSABLE FIRE ALARM CONTROL PANEL TO REMAIN. EXISTING FIRE ALARM SYSTEM IS MANUFACTURED BY FIRE-LITE ALARMS MS-9200UDLS SERIES.

- E100 NOTES:
- ITEMS TO BE PRICED SEPARATELY
- 11 PROVIDE EXIT SIGNS, LED TYPE, WITH 90 MINUTES NICKEL CADMIUM BATTERY, WHITE THERMOPLASTIC HOUSING, RED LETTER COLOR, SINGLE OR DOUBLE FACE AS SHOWN ON FLOOR PLAN, LITHONIA MANUFACTURER LQM SERIES OR APPROVED EQUAL. MINIMUM MOUNTING HEIGHT TO BE 2'-0" HIGHER THAN THE HEIGHT OF THE NEW LIFT EQUIPMENT. COORDINATE WITH THE OWNER FOR THE HEIGHT OF THE LIFT EQUIPMENT. CONNECT THE NEW EXIT SIGN TO THE EXISTING LIGHTING CIRCUIT AHEAD OF THE BRANCH CIRCUIT LIGHTING SWITCH.
 - 12 PROVIDE NEW EMERGENCY EGRESS LIGHTING LED UNIT WITH 90 MINUTES BATTERY, BUILT-IN PHOTOCELL, SUITABLE FOR WET LOCATION, U.S. ARCHITECTURAL RZR-VM1-20LED-700mA OR APPROVED EQUAL. MOUNTING HEIGHT 10' AFF. CONNECT NEW EMERGENCY LIGHTING UNIT TO THE EXISTING LIGHTING CIRCUIT AHEAD OF THE BRANCH CIRCUIT LIGHTING SWITCH.
 - 13 PROVIDE NEW EMERGENCY LIGHTING LED UNITS IN THE OFFICE AREAS WITH 90 MINUTES NICKEL CADMIUM BATTERY, LITHONIA ELM2L OR APPROVED EQUAL. CONNECT NEW EMERGENCY LIGHTING UNIT TO THE EXISTING LIGHTING CIRCUIT AHEAD OF THE BRANCH CIRCUIT LIGHTING SWITCH. EMERGENCY LIGHTING UNITS AND EXIT SIGNS AS SHOWN ARE TYPICAL FOR THE FIRST AND SECOND FLOORS IN THE OFFICE AREA.
 - 14 PROVIDE NEW FIRE ALARM PULL STATION. NEW PULL STATION SHALL BE COMPATIBLE WITH THE EXISTING FIRE ALARM SYSTEM. CONNECT NEW FIRE ALARM PULL STATION TO THE EXISTING FIRE ALARM CONTROL PANEL.



- LEGEND
- YORK
 - Electrical connection to MP1
 - Outdoor unit connection to Indoor unit
 - Block wall



AMERESCO, INC.
12001 SUNRISE VALLEY DR. #205
RESTON, VA 20191

REVISION	DATE
60% PROGRESS	8-21-18
100% REVIEW	9-4-18
CONSTRUCTION - BID	9-26-18
REVISIONS - 100% REVIEW	10-7-19
FOR CONSTRUCTION	11-20-19
FOR CONSTRUCTION	12-2-19

PROJECT NAME:
PSM HAITI WAREHOUSE
SHORT TERM IMPROVEMENTS
AIRPORT INDUSTRIAL PARK FLEURIOT
WAREHOUSE, PORT-AU-PRINCE, HAITI

CLIENT:
CHEMONICS INTERNATIONAL
251 18TH ST, SUITE 1200
ARLINGTON, VA 22202

ISSUED FOR:
FOR CONSTRUCTION
12/02/2019

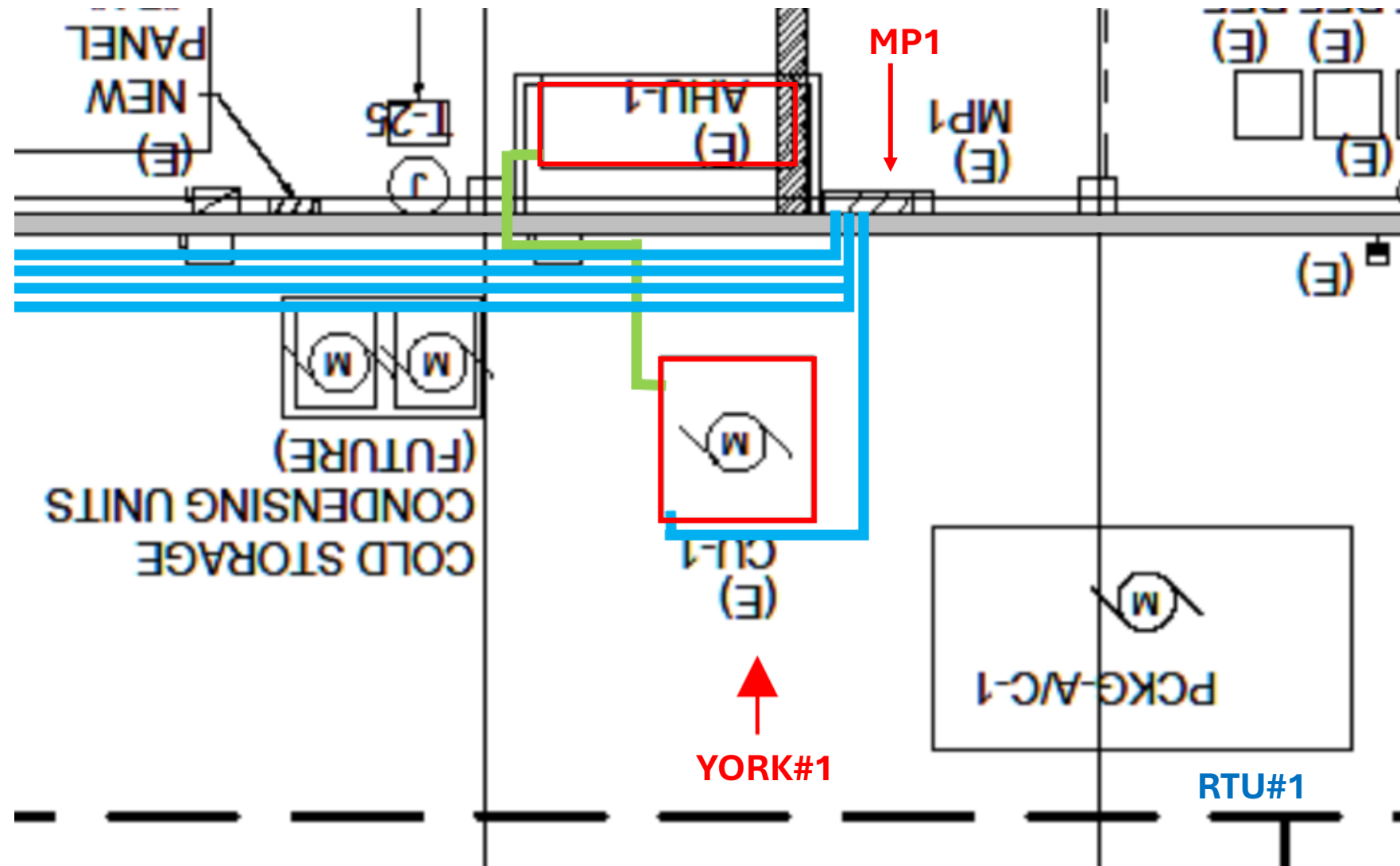
DRAWN BY: SN
REVIEWED BY: AL
SCALE: 1/8" = 1'-0"
AMERESCO PROJECT NUMBER: 520794000

AIR CONDITIONED
SIDE PART PLAN
NEW WORK

E100
SHEET 19 OF 26

YORK#1

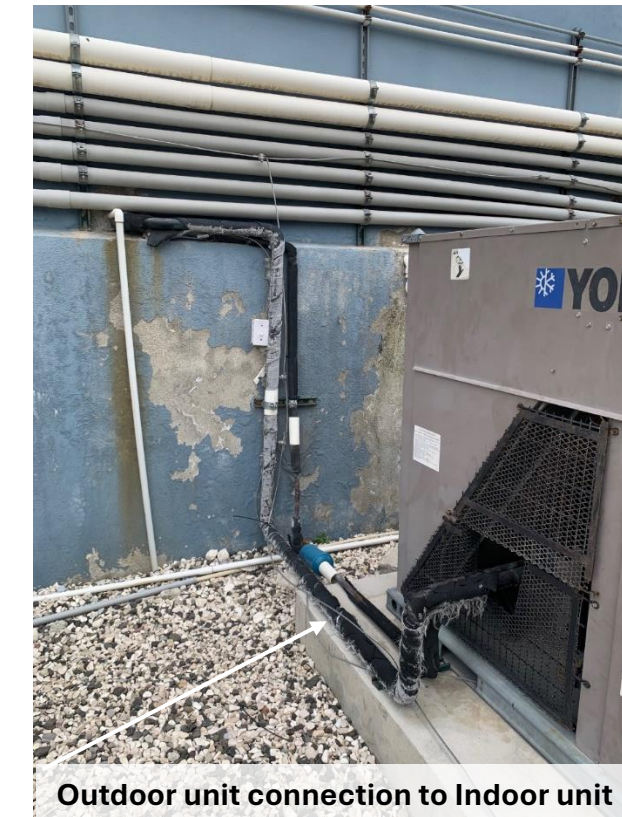
EXISTING CONDITIONS



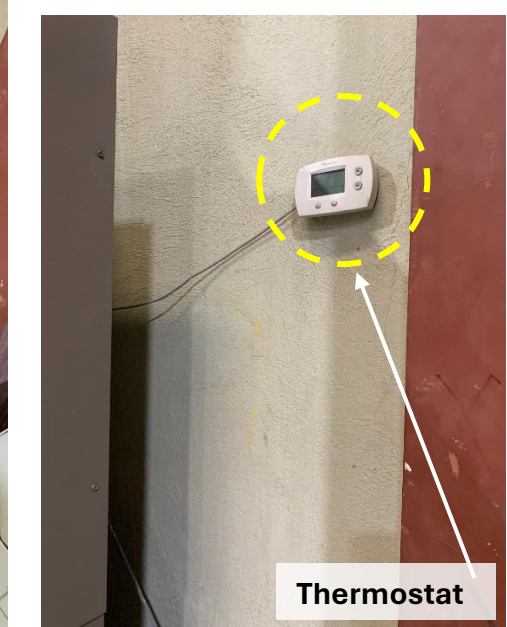
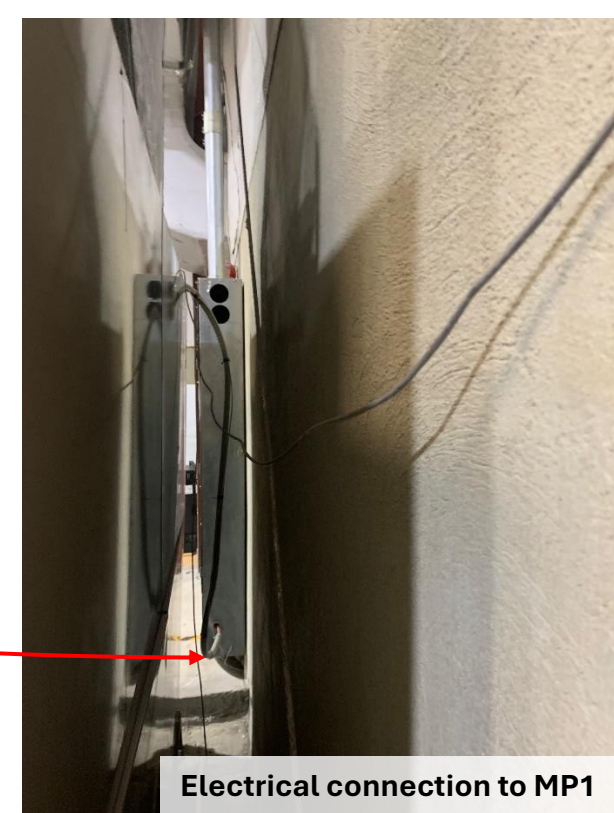
Outside unit



Indoor unit



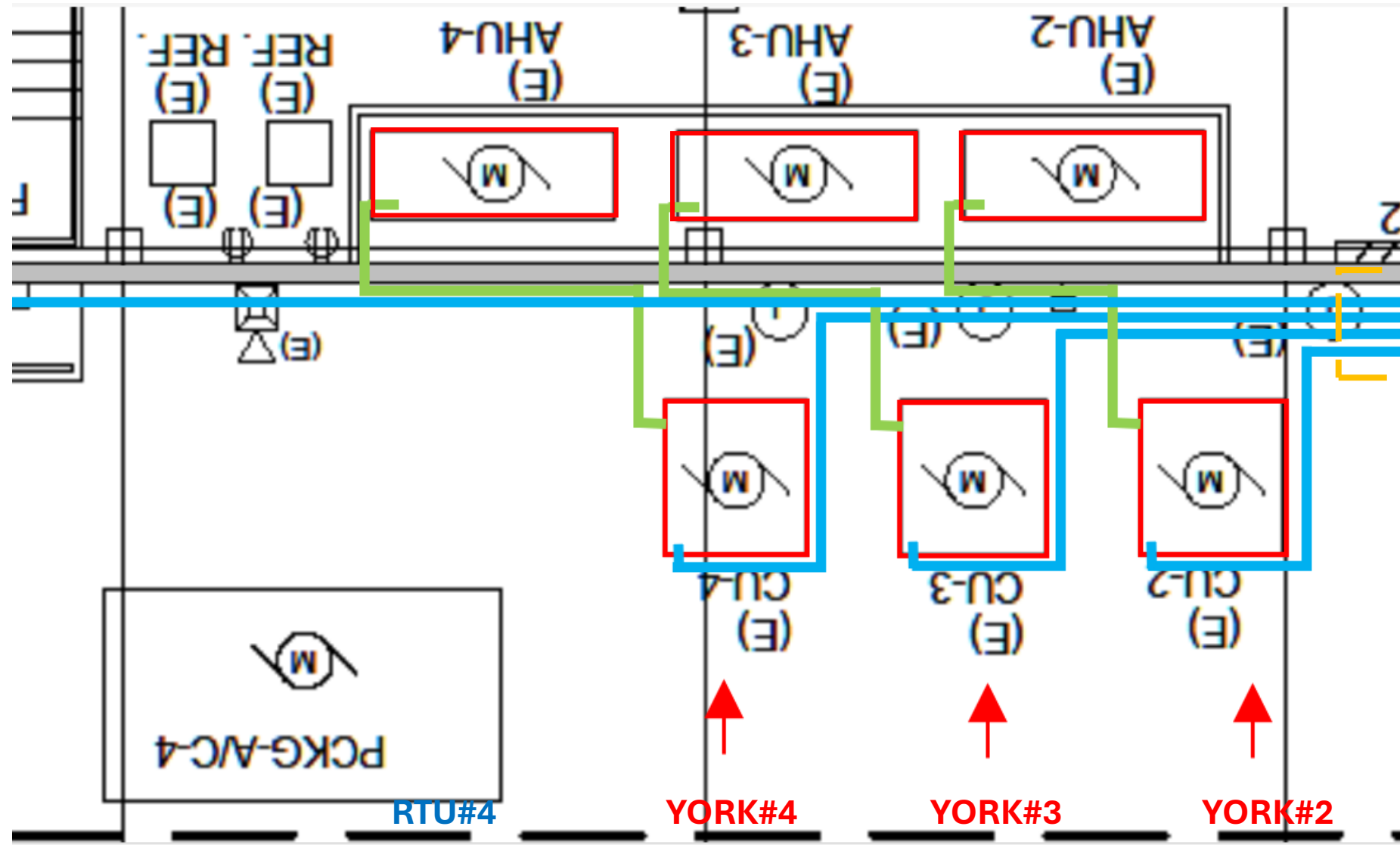
Outside unit



Indoor unit

YORK#2 & 3

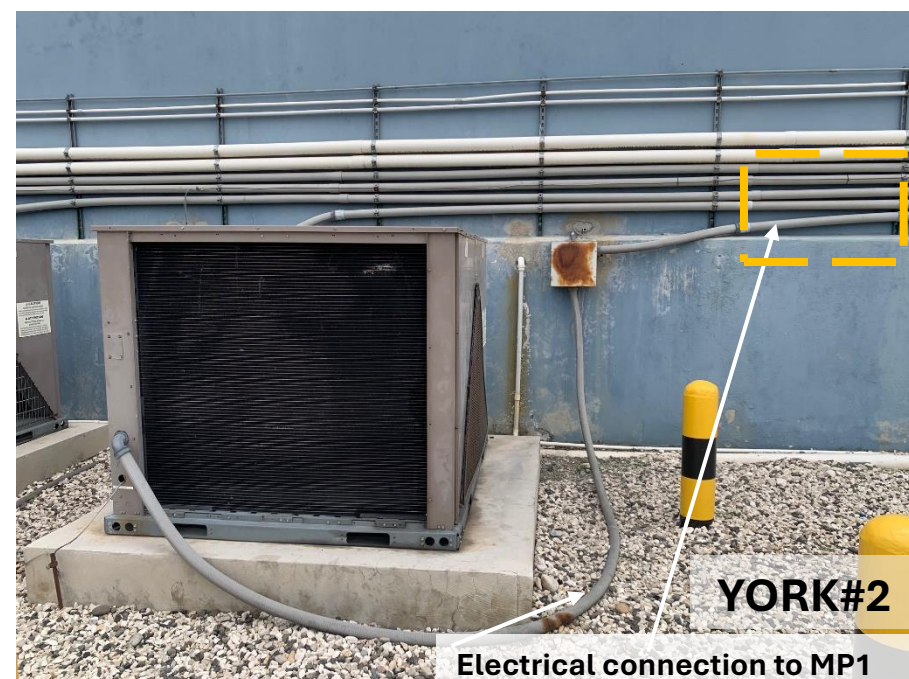
EXISTING CONDITIONS



Outside unit



Indoor unit



Electrical connection to MP1



Outdoor unit connection to Indoor unit

Outside unit



Electrical connection to MP1

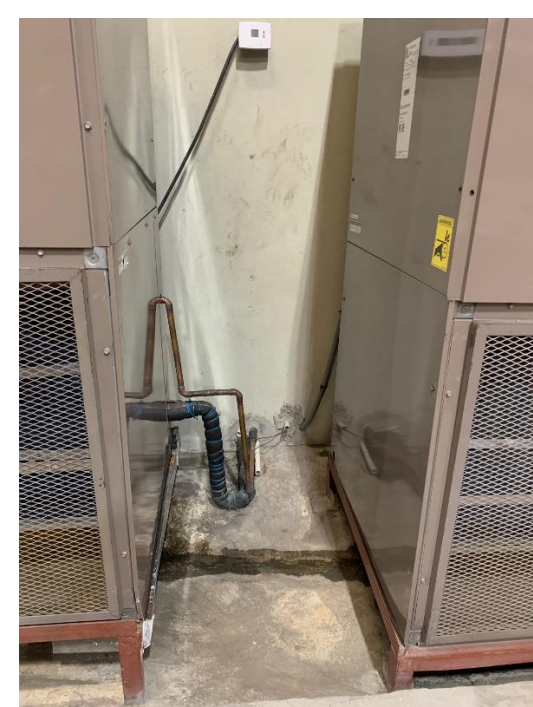


Outdoor unit connection to Indoor unit

Outside unit



Electrical connection to MP1

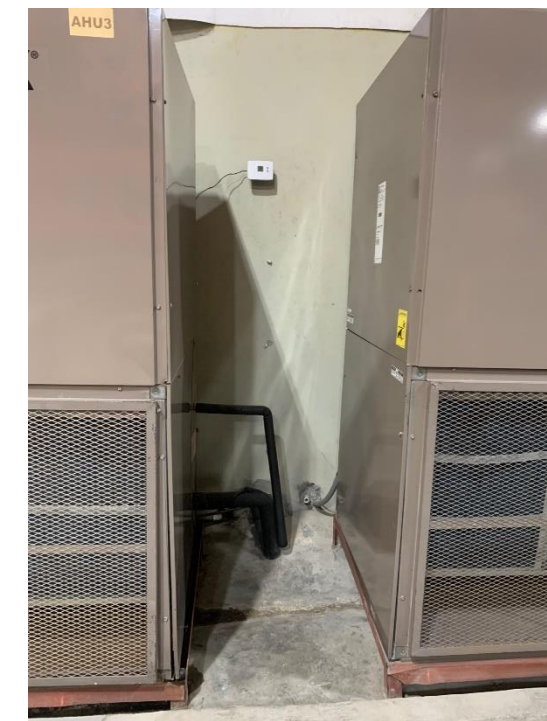


Outdoor unit connection to Indoor unit

Indoor unit



Electrical connection to MP1



Outdoor unit connection to Indoor unit

Indoor unit

YORK#4

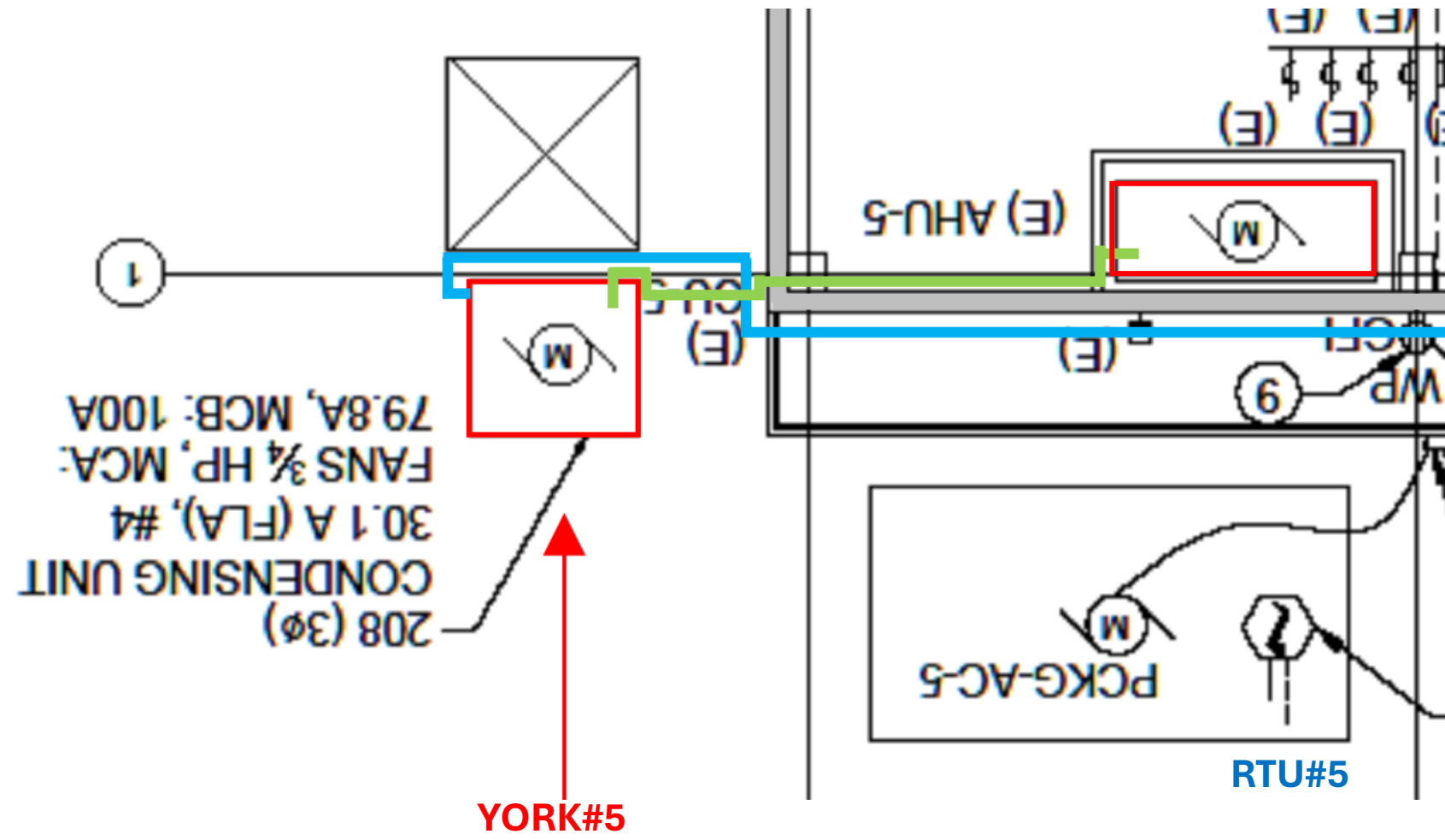
EXISTING CONDITIONS



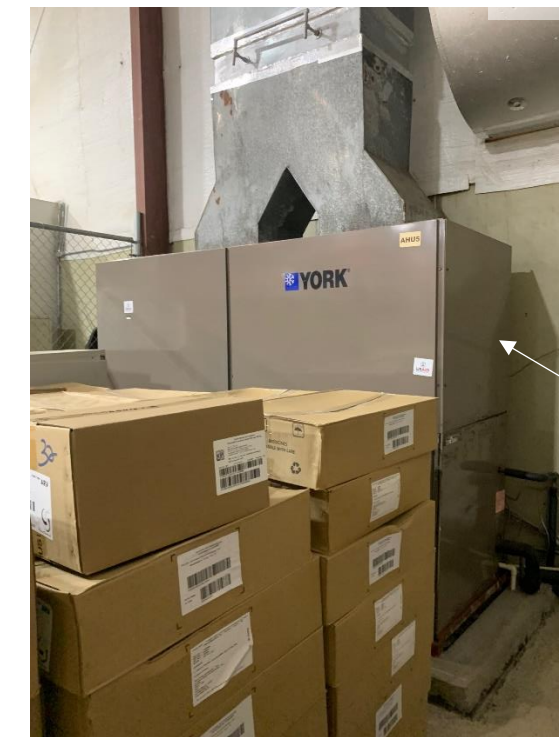
Outside unit



Indoor unit



Outside unit



Indoor unit

YORK#5

EXISTING CONDITIONS



Electrical connection to MP1



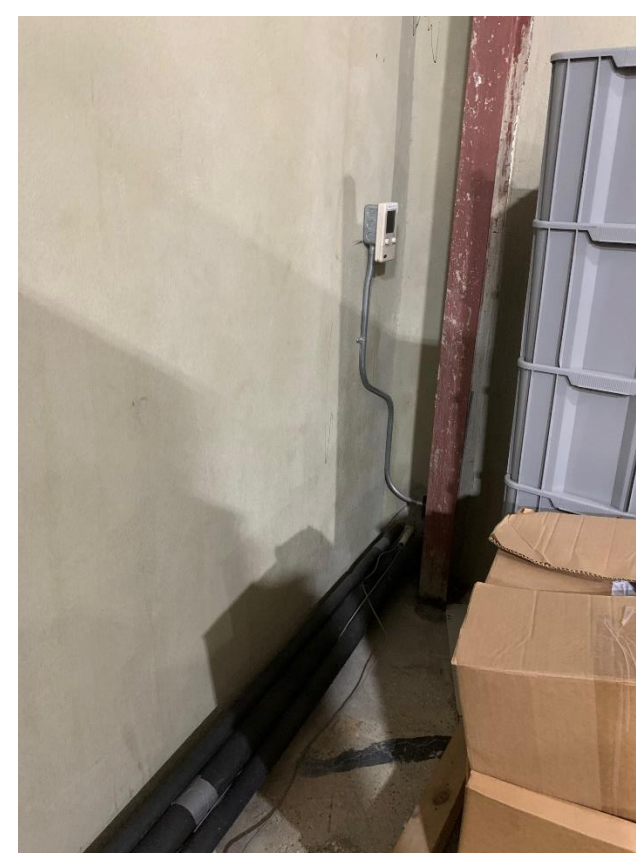
Outdoor unit connection to Indoor unit



Electrical connection to MP1



Outdoor unit connection to Indoor unit



Indoor unit