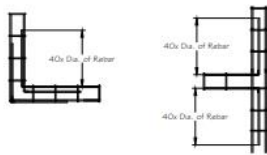
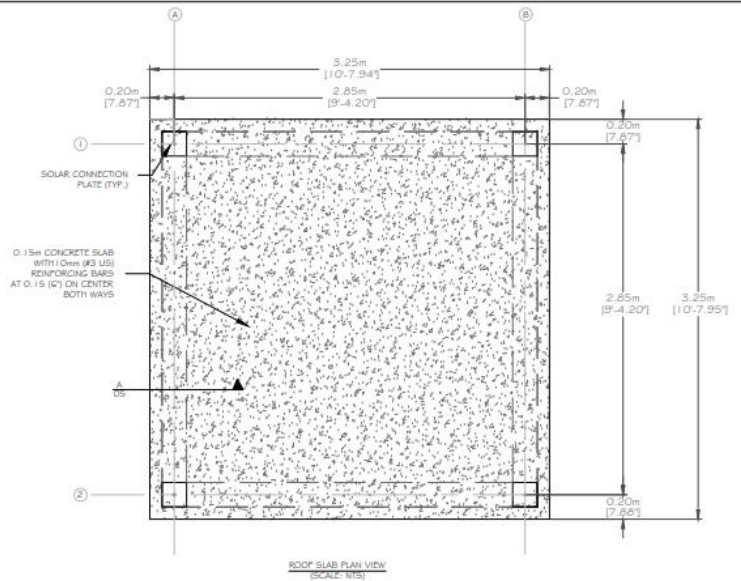
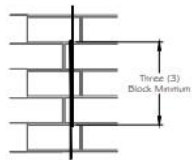


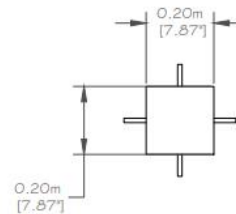
ROOF SLAB AND TOP BEAM REBAR DETAIL
(SCALE: NTS)



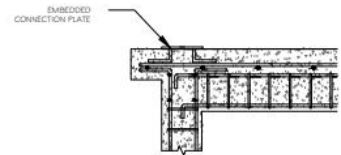
REBAR CORNER AND REBAR TEE DETAIL
(SCALE: NTS)



REBAR SPLICING DETAIL
(SCALE: NTS)



SOLAR CONNECTION PLATE DETAIL
(SCALE: NTS)



EMBEDDED SOLAR CONNECTION PLATE DETAIL
(SCALE: NTS)

Date: 07/20/15
Drawn By: KRU
Reviewed By: JMZ
Scale: NTS
Project #: 00.000.00
Sheet No.
5 of 5

Sheet Title:
3m x 3m Enclosure
Project name:
Standard
Location:
Charleston, South Carolina

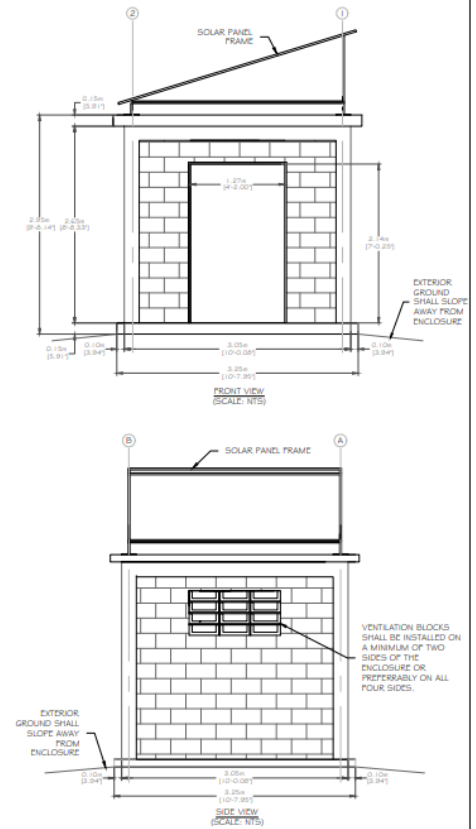
Rev	Date	Description

Copyright © Water Mission 2015 - Use of this document constitutes acceptance of Water Mission's Terms of Use available at: watermission.org/terms-of-use/

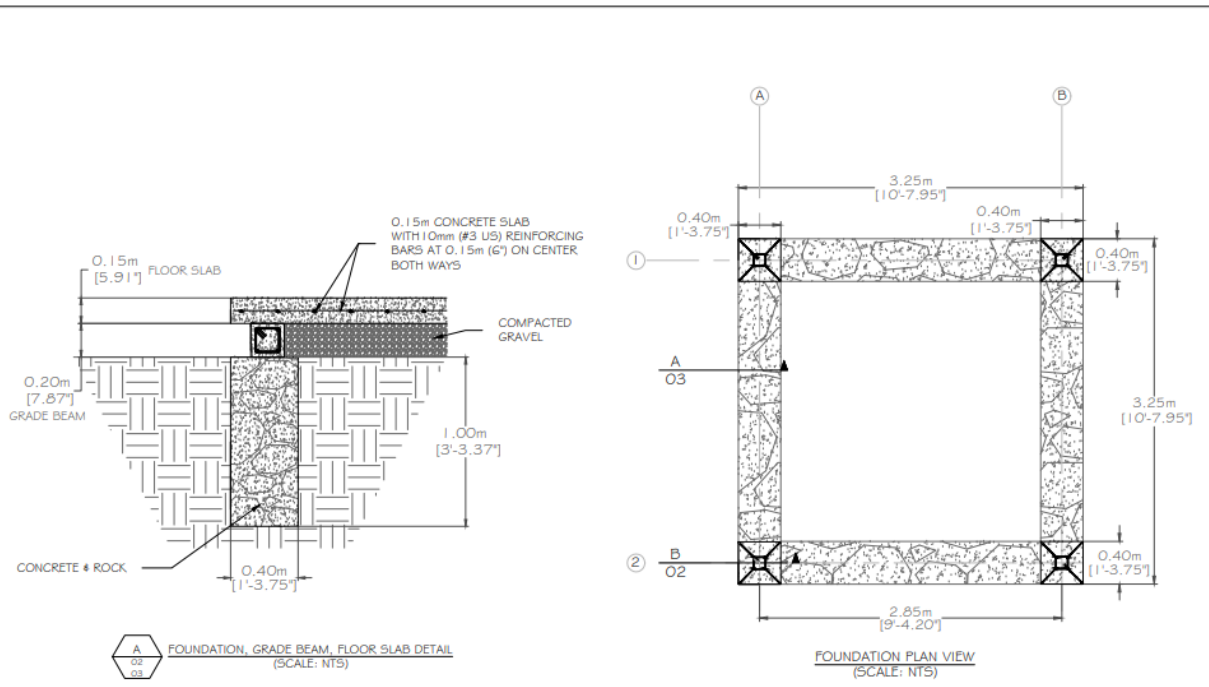


1150 Kanawha St., Bldg. 1 G05 N Charleston, SC 29405
ph (843) 763-7395 fax (843) 763-6062 www.watermission.org

1. ONLY HIGH QUALITY, FULLY INTACT BLOCKS SHALL BE USED IN CONSTRUCTION.
2. BLOCKS SHALL BE SOAKED IN WATER BEFORE BEING Laid.
3. BLOCK MORTAR JOINTS SHALL HAVE A THICKNESS OF MINIMUM 1.0cm TO MAXIMUM 1.5cm (MIN. 0.25" TO MAX 0.75") IN ALL DIRECTIONS.
4. ONLY RIBBED REBAR IS ACCEPTABLE FOR PRIMARY REBAR. SMOOTH REBAR MAY BE USED FOR STIRRUPS.
5. A MINIMUM OF 3 DAYS CONCRETE CURING FOR BOTH THE FLOOR SLAB AND THE COLUMNS.
6. A MINIMUM OF 7 DAYS CONCRETE CURING FOR ROOF SLAB.
7. ROOF IS DESIGNED FOR ONLY THE WEIGHT OF SOLAR PANELS. A WATER STORAGE TANK ON TOP OF THIS BUILDING IS NOT ALLOWED.
8. TOP BEAM AND ROOF SHALL BE CONSTRUCTED TOGETHER AS ONE CONTINUOUS POUR.
9. MINIMUM COVER ON REINFORCING BARS SHALL BE 5cm (2") WHEN CONCRETE IS TO BE EXPOSED AND 8cm (3") WHEN CONCRETE IS TO BE CAST AGAINST EARTH.
10. CONCRETE SHALL HAVE A MINIMUM COMPRESSIVE STRENGTH OF 3,000psi.
11. REINFORCING BARS SHALL HAVE A MINIMUM YIELD STRENGTH OF 40,000psi.



1150 Kruger St, Bldg 1605 N Charleston, SC 29405
ph (843) 769-7395 fax (843) 763-6082 www.watermission.org



Date: 07/20/15
 Drawn By: ISJ
 Reviewed By: JMJ
 Scale: NTS
 Project #: 00.000.00

Sheet No.
 2 of 5

Sheet Title:
3m x 3m Enclosure

Project name:
Standard

Location:
Charleston, South Carolina

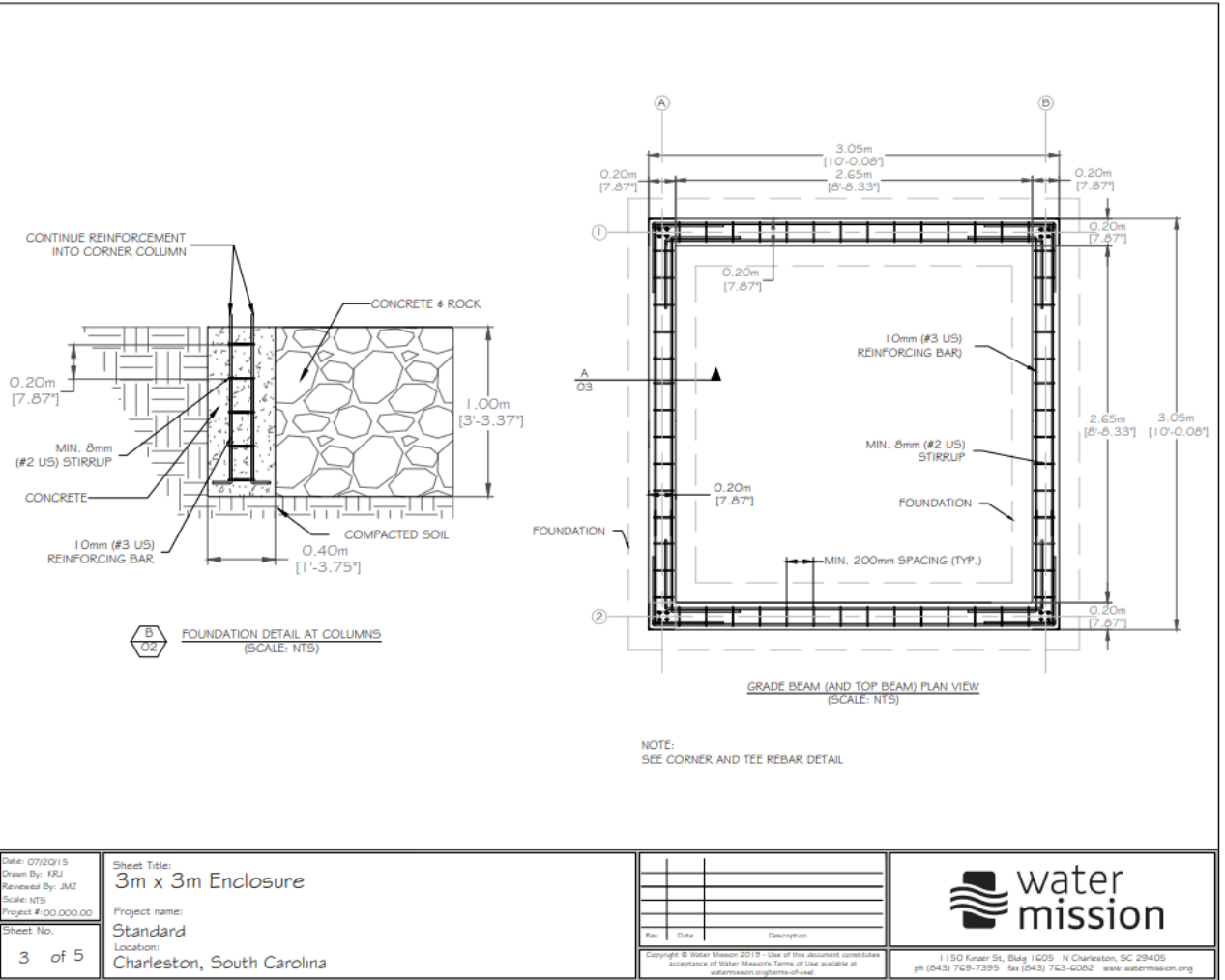
Rev	Date	Description

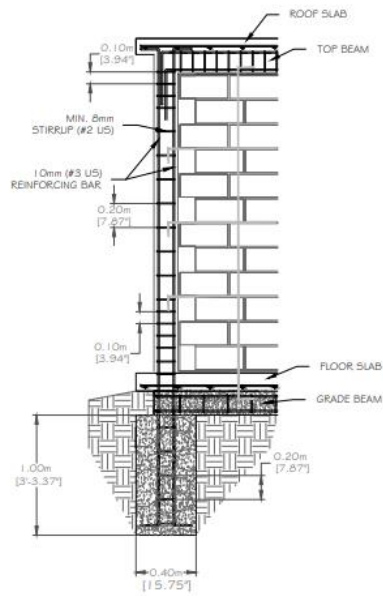
Copyright © Water Mission 2015. Use of this document constitutes acceptance of Water Mission's Terms of Use available at watermission.org/terms-of-use/



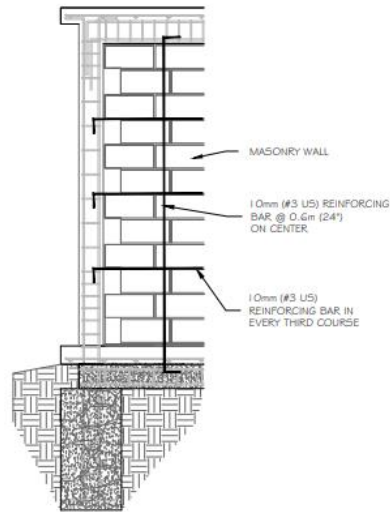
water
mission

1150 Kanaw St, Bldg 1605 - N Charleston, SC 29405
 ph (843) 763-7395 fax (843) 763-6062 www.watermission.org

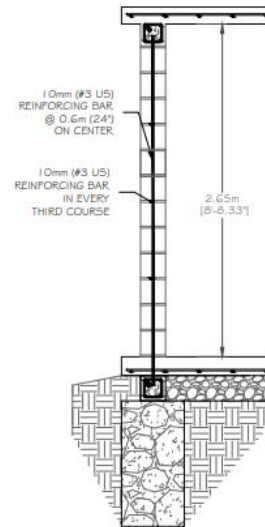




COLUMN REBAR DETAIL
(SCALE: NTS)



MASONRY BLOCK REINFORCING DETAIL
ELEVATION FACE VIEW
(SCALE: NTS)



MASONRY BLOCK REINFORCING DETAIL
ELEVATION SIDE VIEW
(SCALE: NTS)

Date: 07/20/15
Drawn By: KRJ
Reviewed By: JAZ
Scale: NTS
Project #: 00.000.00

Sheet No.
4 of 5

Sheet Title:
3m x 3m Enclosure
Project name:
Standard
Location:
Charleston, South Carolina

Rev.	Date	Description

Copyright © Water Mission 2015 - Use of this document constitutes acceptance of Water Mission's Terms of Use available at: watermission.org/terms-of-use/



1150 Kanzer St, Bldg 1005 N Charleston, SC 29405
ph (843) 763-7395 fax (843) 763-6052 www.watermission.org